

14"

3" Zipper position

FIRST AID

- Call a poison control center or doctor immediately for treatment advice.
- Have person sip a glass of water if able to swallow.
- Remove clothing if contaminated with pesticide.
- Hold eye open and flush with water for 15-20 minutes.
- Remove contact lenses. If present, after the first 5 minutes, then continue flushing eyes.
- Flush hair thoroughly with water.
- Take all contaminated clothes.
- Rinse skin immediately with plenty of water for 15-20 minutes.
- Call a poison control center or doctor for treatment advice.

IF ON SKIN OR CLOTHING:

- Wash thoroughly with soap and water.
- Remove clothing immediately.
- Call a poison control center or doctor for further treatment advice.

IF INHALED:

- Move to fresh air.
- Call a poison control center or doctor for further treatment advice.

Have the product container or label with you when calling a poison control center or doctor or going for treatment.

HAZARDS TO HUMANS AND DOMESTIC ANIMALS

PRECAUTIONARY STATEMENTS

DANGER TO HUMANS AND DOMESTIC ANIMALS

Causes moderate eye irritation. Avoid contact with eyes or clothing. Wash thoroughly with soap and water.

ENVIRONMENTAL HAZARDS

This product is extremely toxic to fish and may be toxic to aquatic invertebrates. Use with care when applying in areas adjacent to any streams or ponds. Do not allow pesticide to enter or run off into storm drains, drainage ditches, gutters, or surface waters. Applying this product in calm weather when rain is not predicted for the next 24 hours will help to ensure that the pesticide is not washed into storm drains or other waterways. Do not apply if rain is forecast within 24 hours of application. Do not apply on saturated soil. Do not allow runoff to occur. Do not contaminate ornamental fish ponds.

APPLICATION RESTRICTIONS

Do not use on plants, or on ornamental plants, or on any area like a gutter where drainage to streams, storm drains, ditches, gutters, or surface waters is possible. Do not use on plants, or on ornamental plants, or on any area like a gutter where drainage to streams, storm drains, ditches, gutters, or surface waters is possible. Do not use on plants, or on ornamental plants, or on any area like a gutter where drainage to streams, storm drains, ditches, gutters, or surface waters is possible.

DIRECTIONS FOR USE

It is a violation of Federal law to use this product in a manner inconsistent with its labeling.

APPLICATION RESTRICTIONS

Do not use on plants, or on ornamental plants, or on any area like a gutter where drainage to streams, storm drains, ditches, gutters, or surface waters is possible. Do not use on plants, or on ornamental plants, or on any area like a gutter where drainage to streams, storm drains, ditches, gutters, or surface waters is possible.

PEEL PLASTIC PRODUCTS

Cust: Bayer

Design: 20lb Deltaguard

Size: 14 x 20 x 2.5 bot gst w/zipper

Date: Apr 16/07

PEEL PLASTIC PRODUCTS

Cust: Bayer

Design: 20lb Deltaguard

Size: 14 x 20 x 2.5 bot gst w/zipper

Eyeline/Eyemark - as per dieline

Process - 300 DPI - @ final size

034

Peel Plastics Products Ltd has done everything possible to ensure the accuracy of this dieline. It is your responsibility to check and confirm all dimensions and measurements before starting your project.

20"

.375" seal area-- one col common ink ok -- no copy



Backed by **BAYER**

A Division of Bayer CropScience LP
2 T. W. Alexander Drive
Research Triangle Park, NC 27709

Bayer Product of India

Applicator Brand	Model	Type	Depth in Feet	Travel in MPH	Application Rate (lb/acre)	Application Settings (lb/acre)
Earthway EVA Spread	2150	Spin Spreader	9.00	3.60	12.00	13.00
Scotts	Pro	Spin Spreader	12.00	3.60	11.5	J
Lacon Rotary	021820	Spin Spreader	11.00	3.60	4.5	F
Syrner	B5-pro	Spin Spreader	10.00	3.60	3.00	3-30
Hermetic EZ-Spreader*	Herdt	Spin Spreader				

*See US to deliver 2 pounds of product per 1,000 square feet.

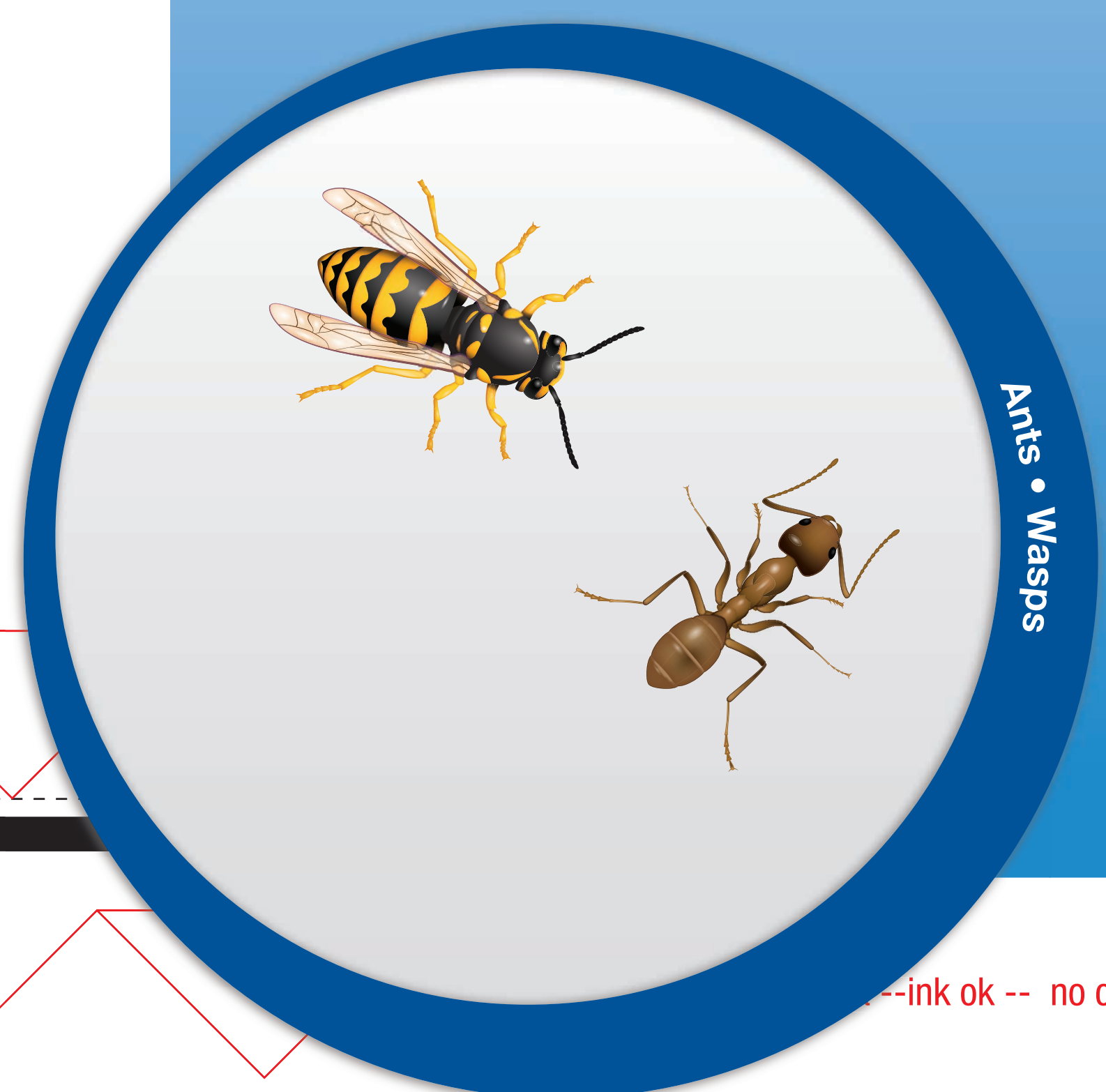
Applicator Brand	Model	Type	Depth in Feet	Travel in MPH	Application Rate (lb/acre)	Application Settings (lb/acre)
Scotts	Surety Green	Spin Spreader	7.00	2.75	2.00	2.50
Scotts	Accu-Gon	Drop Spreader	1.80	2.75	2.25	2.75

GUSSET

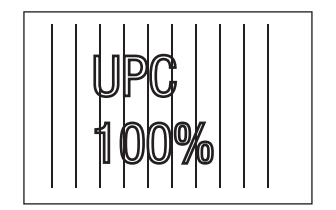
BOTTOM

Net Weight
20 Pounds

79121539
7909827SD 141014AV1



ink ok -- no copy

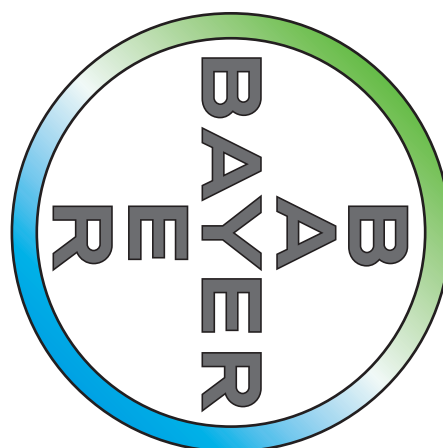


UPC should be 100% minimum and oriented in direction as shown. UPC should not be in any seal areas.

2" x 0.25" seal area - no ink

2.5"

20"



DeltaGard[®]

INSECTICIDE GRANULE

FOR SALE TO, USE AND STORAGE BY COMMERCIAL APPLICATORS ONLY. FOR INSECT CONTROL IN TURFGRASSES, LANDSCAPE ORNAMENTAL PLANTINGS (INCLUDING INTERIOR PLANTSCAPES), PERIMETERS AROUND COMMERCIAL, INDUSTRIAL, RESIDENTIAL, AND RECREATIONAL AREAS.

FOR OUTDOOR USE ON LAWNS, GROUNDS, AND PERIMETER TREATMENTS.

Kills Listed Insects in Lawns

Controls Listed Home Invading Pests

10 Pounds Treats up to 5,000 Square Feet

Controls Listed Surface-Feeding Pests

Kills Ticks (including those that may carry Lyme Disease)

NOT FOR USE ON GOLF COURSES OR SOD FARMS

Water Dispersible Granule

ACTIVE INGREDIENT:

Deltamethrin: 0.1%

OTHER INGREDIENTS: 99.9%

TOTAL: 100.0%

EPA Reg. No. 432-836

EPA Est. No. 070989-MO-001

KEEP OUT OF REACH OF CHILDREN
CAUTION

PARA EL USUARIO: Si usted no lee inglés, no use este producto hasta que le hayan explicado completamente las instrucciones en la etiqueta. (TO THE USER: If you cannot read English, do not use this product until the label has been fully explained to you.)

For MEDICAL and TRANSPORTATION Emergencies ONLY Call 24 Hours A Day 1-800-334-7577

For PRODUCT USE Information Call 1-800-331-2867

3" Zipper position



DeltaGard[®] G

INSECTICIDE GRANULE

FOR SALE TO, USE AND STORAGE BY COMMERCIAL APPLICATORS ONLY.
FOR INSECT CONTROL IN TURFGRASSES, LANDSCAPE ORNAMENTAL
PLANTINGS (INCLUDING INTERIOR PLANTSCAPES), PERIMETERS
AROUND COMMERCIAL, INDUSTRIAL, RESIDENTIAL, AND RECREATIONAL
AREAS.

FOR OUTDOOR USE ON LAWNS, GROUNDS, AND PERIMETER
TREATMENTS.

Kills Listed Insects in Lawns

Controls Listed Home Invading Pests

10 Pounds Treats up to 5,000 Square Feet

Controls Listed Surface-Feeding Pests

Kills Ticks (Including those that may carry Lyme Disease)

NOT FOR USE ON GOLF COURSES OR SOD FARMS

Water Dispersible Granule

ACTIVE INGREDIENT:

Deltamethrin: 0.1%

OTHER INGREDIENTS: 99.9%

TOTAL: 100.0%

EPA Reg. No. 432-836

EPA Est. No. 070989-MO-001

**KEEP OUT OF REACH OF CHILDREN
CAUTION**

PARA EL USUARIO: Si usted no lee inglés, no use este producto hasta que
le hayan explicado completamente las instrucciones en la etiqueta.

(TO THE USER: If you cannot read English, do not use this product until the
label has been fully explained to you.)

For MEDICAL and TRANSPORTATION Emergencies ONLY Call 24 Hours A
Day 1-800-334-7577

For PRODUCT USE Information Call 1-800-331-2867

Net Weight

20 Pounds

79121539

79096275D 141014AV1

Ants • Wasps



20"

3" Zipper position

FIRST AID	
If swallowed:	<ul style="list-style-type: none"> • Call a poison control center or doctor immediately for treatment advice. • Have person sip a glass of water if able to swallow. • Do not induce vomiting unless told to do so by a poison control center or doctor.
If in eyes:	<ul style="list-style-type: none"> • Hold eye open and rinse slowly and gently with water for 15-20 minutes. • Remove contact lenses, if present, after the first 5 minutes, then continue rinsing eyes. • Call a poison control center or doctor for treatment advice.
If on skin or clothing:	<ul style="list-style-type: none"> • Take off contaminated clothing. • Rinse skin immediately with plenty of water for 15-20 minutes. • Call a poison control center or doctor for treatment advice.
If inhaled:	<ul style="list-style-type: none"> • Move person to fresh air. • If person is not breathing, call 911 or an ambulance, then give artificial respiration, preferably mouth-to-mouth if possible. • Call a poison control center or doctor for further treatment advice.

Have the product container or label with you when calling a poison control center or doctor or going for treatments.

PRECAUTIONARY STATEMENTS

HAZARDS TO HUMANS AND DOMESTIC ANIMALS CAUTION

Harmful if swallowed. Causes moderate eye irritation. Avoid contact with eyes or clothing. Wash thoroughly with soap and water after handling.

ENVIRONMENTAL HAZARDS

This product is extremely toxic to fish and aquatic invertebrates. Use with care when applying in areas adjacent to any body of water.

To protect the environment, do not allow pesticide to enter or run off into storm drains, drainage ditches, gutters, or surface waters. Applying this product in calm weather when rain is not predicted for the next 24 hours will help to ensure that wind or rain does not blow or wash pesticide off the treatment area. Sweeping any product that lands on a driveway, sidewalk, or street, back onto the treated area of the lawn or garden will help to prevent run off to water bodies or drainage systems.

DIRECTIONS FOR USE

It is a violation of Federal law to use this product in a manner inconsistent with its labeling.

APPLICATION RESTRICTIONS

Not for use on plants being grown for sale or other commercial use, or for commercial seed production, or for research purposes. For use on plants intended for aesthetic purposes or climatic modification and being grown in ornamental gardens or parks, or on lawns and grounds.

Not for use in commercial greenhouses or nurseries.

Not for use on sod farms, grass grown for seed, or on golf course turf.

Apply this product directly to the lawn or garden area. Water treated area as directed on this label. Do not water to the point of run-off.

Do not make applications during rain.

Do not apply on saturated soil. Do not allow runoff to occur. Do not contaminate ornamental fish ponds.

Application is prohibited directly into sewers or drains, or to any area like a gutter where drainage to sewers, storm drains, water bodies, or aquatic habitat can occur. Do not allow the product to enter any drain during or after application. Apply this product as prescribed on this label.

To avoid potential residue on concrete surfaces (patios, sidewalks, driveways, pavers, or similar material), it is recommended that granules applied to these surfaces be removed.

In New York State, product may not be applied to turf within 100 feet of a coastal marsh, or stream that drains directly into a coastal marsh. For control of turf insects other than ticks in New York State, a second application may be made after two weeks if target insect activity persists.

Food utensils such as spoons and measuring cups must not be used for food purposes after use in measuring pesticides. Do not allow children or pets on treated areas until granules have been watered into the soil and the grass or soil is dry.

PRODUCT INFORMATION

DELTAGARD® G Insecticide Granule is a broad spectrum residual pyrethroid insecticide for the control of major insect pests in turfgrasses and landscape ornamentals (including interior plantscapes) and around the perimeters of structures in residential, commercial, and recreational areas. DELTAGARD G Insecticide Granule is a 0.1% granular formulation of deltamethrin on a water dispersible carrier. Treat as directed. Use with care when applying in areas adjacent to any body of water.

RECOMMENDATIONS FOR TURFGRASSES, ORNAMENTAL PLANTINGS, AND PERIMETER TREATMENTS:

Apply DELTAGARD G Insecticide Granule as a broadcast application with suitable and calibrated application equipment to give complete and uniform coverage of pest infested areas. Applications should be made using the rates shown below:

Pest	Dosage of Product	Application Procedure
Annual bluegrass weevil (<i>Hyperodes</i>) (adult), Ants, Armyworms, Bermudagrass mites, Billbugs (adult), Black Turfgrass Ateneus, Boxelder bugs, Centipedes, Chiggers, Chinchbugs, Clover mites, Cockroaches, Crickets, Cutworms, Darkling ground beetles, Digger wasps, Essex skipper, Field crickets, Fiery skipper, Fire ants, Firebrats, Flea beetles, Grasshoppers, Japanese Beetles (adult), Lawn moths, Leafhoppers, Mealybugs (adult), Scorpions, Silverfish, Sod webworms, Sowbugs, Spiders, Spittlebugs, Springtails, Ticks (including those that may carry Lyme disease), and Vegetable weevils	2 to 3 pounds per 1,000 square feet OR 0.08 to 0.13 pound active ingredient per acre OR 87 to 131 pounds per acre	Treat when insects first appear. Apply this product uniformly to the treated area. Use the higher application rate for subsurface pests and/or for extended residual control. For optimum results, irrigate with an adequate quantity of water to thoroughly moisten grass and thatch, and dissolve the insecticide granules. Do not apply more than once per week. For Imported Fire Ants, do not apply more than once every two weeks.
Mole crickets	2 to 3 pounds per 1,000 square feet	In order to improve efficacy, irrigate as soon as possible with 1/4 to 1/2 inch of water. Do not apply more than once per week.

APPLICATION EQUIPMENT: DELTAGARD G Insecticide Granule is a granular formulation. Apply with a fertilizer spreader or equivalent equipment as uniformly as possible. Spreaders should be calibrated periodically to ensure that equipment wear or other factors have not altered the flow rate of DELTAGARD G Insecticide Granule. Calibration instructions are included in the Owner's Manual that was provided by the equipment manufacturer at the time of purchase.

DELTAGARD G Insecticide Granule Recommended Spreader Settings

Professional						
Applicator Brand	Model	Type	Swath in Feet	Travel in MPH	Applicator Setting: 0.08 pounds active ingredient per acre	Applicator Setting: 0.13 pounds active ingredient per acre
Earthway EV-N Spread	2150	Spin Spreader	9.00	3.00	12.00	13.00
Scotts	Pro	Spin Spreader	12.00	3.00	H.5	J
Lesco Rotary	021820	Spin Spreader	11.00	3.00	A.5	B
Spyker	B3-pro	Spin Spreader	10.00	3.00	3.00	3.30
Republic EZ-Spreader*	Hand	Spin Spreader				
* Set to 5 to deliver 2 pounds of product per 1,000 square feet						
Lawn & Garden						
Applicator Brand	Model	Type	Swath in Feet	Travel in MPH	Applicator Setting: 0.08 pounds active ingredient per acre	Applicator Setting: 0.13 pounds active ingredient per acre
Scotts	Speedy Green 3000	Spin Spreader	7.00	2.75	2.00	2.50
Scotts	Accu Green 3000	Drop Spreader	1.80	2.75	2.25	2.75

TICK CONTROL (OUTDOORS): For control of Ticks (including, but not limited to Bear Tick, Black-legged Tick, Brown Dog Tick, Deer Tick, Lone Star Tick, Western Black-legged Tick, Wood Tick), a regular treatment program should be followed. Treat once a month as directed above when pests first appear in late spring (May-June) and continue until late summer (August-September) into the fall.

SOD WEBWORMS: If Lawn Moths (Sod Webworm Adults) are noticed in large numbers at dusk, or at first sign of damage to lawn, treat entire lawn uniformly.

PERIMETER TREATMENT: To help prevent infestation of buildings by Ants, Boxelder Bugs, Brown Dog Ticks, Centipedes, Cockroaches, Clover Mites, Crickets, Field Crickets, Fire Ants, Sowbugs, Spiders, Springtails (Collembola), Termites, and Ticks; treat a band 5 to 10 feet wide around and adjacent to the building where pests are active and may find entrance. Treat at a rate of 1 to 1 1/2 pounds per 500 square feet or 2 to 3 pounds per 1,000 square feet.

For termites, the purpose of such applications of DELTAGARD G Insecticide Granule is to kill workers or winged reproductive forms which may be present at the time of treatment. Such applications are not a substitute for mechanical alteration, soil treatment or foundation treatment but are merely a supplement.

SPOT TREATMENT: To control Ants, including Acrobat, Argentine, Big Headed, Cornfield, Harvester, Leafcutter, Little Black, Pavement and Pyramid Ants; if possible, locate and treat nest first. Product should be applied to thoroughly cover the nest (1 to 2 teaspoons) and sprinkled with sufficient water to dissolve granules. In addition to treating ant nests or mounds, entry points of buildings and the soil surface along the perimeter of the building should be treated.

DIGGER WASPS: Apply 1 to 2 teaspoons of granules in and around each individual ground nest opening. Make the application at dusk when wasps are not active.

IMPORTED FIRE ANTS: Apply two tablespoons over each 8" to 10" diameter mound and up to 2 feet around to prevent escape of the queen. Immediately after application, water the granules into the soil gently with a light sprinkling can to avoid disturbing the colony. Use at least 1 gallon of water per mound. Apply in cool weather during the spring and fall (65°-80°F), or in early morning or late evening for best results. Treat new mounds as they appear, but no more than once every two weeks. If possible, make applications after a recent rainfall.

FLOWER, SHRUB, ORNAMENTAL PLANT BEDS AND INTERIOR PLANTSCAPES: To control Ants, Fire Ants, Armyworms, Centipedes, Cockroaches, Crickets, Cutworms, Grasshoppers, Pillbugs, Sowbugs, Spiders, Springtails, and Ticks; apply granules evenly over soil within the beds, interiorscapes, and under shrubbery. Use the same dosage recommended for control of these pests in lawns. For optimum results, irrigate with an adequate quantity of water to thoroughly moisten treated area and dissolve the insecticide granule. Do not use on or around fruit and nut trees, vegetable plants or around any plants used for food.

STORAGE AND DISPOSAL

Do not contaminate water, food, or feed by storage or disposal.

Pesticide Storage: Store in original container in a secured, dry storage area. Prevent cross-contamination with other pesticides and fertilizers. If the container is leaking or material is spilled, sweep up and remove to chemical waste area.

Pesticide Disposal: Wastes resulting from the use of this product may be disposed of on-site or at an approved waste disposal facility.

Container Handling: Non-refillable container. Do not reuse or refill this container. Offer for recycling, if available. Completely empty container (by shaking and tapping sides and bottom) into application equipment. Dispose of container in a sanitary landfill or by incineration if allowed by State and local authorities. If burned, stay out of smoke.

IMPORTANT: READ BEFORE USE

Read the entire Directions for Use, Conditions, Disclaimer of Warranties and Limitations of Liability before using this product. If terms are not acceptable, return the unopened product container at once.

By using this product, user or buyer accepts the following Conditions, Disclaimer of Warranties and Limitations of Liability.

CONDITIONS: The directions for use of this product are believed to be adequate and must be followed carefully. However, it is impossible to eliminate all risks associated with the use of this product. Crop injury, ineffectiveness or other unintended consequences may result because of such factors as weather conditions, presence of other materials, or the manner of use or application, all of which are beyond the control of Bayer CropScience LP. All such risks shall be assumed by the user or buyer.

DISCLAIMER OF WARRANTIES: TO THE EXTENT CONSISTENT WITH APPLICABLE LAW, BAYER CROPSCIENCE LP MAKES NO OTHER WARRANTIES, EXPRESS OR IMPLIED, OF MERCHANTABILITY OR OF FITNESS FOR A PARTICULAR PURPOSE OR OTHERWISE, THAT EXTEND BEYOND THE STATEMENTS MADE ON THIS LABEL. No agent of Bayer CropScience LP is authorized to make any warranties beyond those contained herein or to modify the warranties contained herein. TO THE EXTENT CONSISTENT WITH APPLICABLE LAW, BAYER CROPSCIENCE LP DISCLAIMS ANY LIABILITY WHATSOEVER FOR SPECIAL, INCIDENTAL OR CONSEQUENTIAL DAMAGES RESULTING FROM THE USE OR HANDLING OF THIS PRODUCT. LIMITATIONS OF LIABILITY: TO THE EXTENT CONSISTENT WITH APPLICABLE LAW, THE EXCLUSIVE REMEDY OF THE USER OR BUYER FOR ANY AND ALL LOSSES, INJURIES OR DAMAGES RESULTING FROM THE USE OR HANDLING OF THIS PRODUCT, WHETHER IN CONTRACT, WARRANTY, TORT, NEGLIGENCE, STRICT LIABILITY OR OTHERWISE, SHALL NOT EXCEED THE PURCHASE PRICE PAID, OR AT BAYER CROPSCIENCE LP'S ELECTION, THE REPLACEMENT OF PRODUCT.

Bayer (reg'd), the Bayer Cross (reg'd) and DeltaGard® are registered trademarks of Bayer.

Backed by
BAYER

Bayer

A Division of Bayer CropScience LP
2 T. W. Alexander Drive
Research Triangle Park, NC 27709
Product of India

3.75" seal area -- one col common ink ok -- no copy

20"

